

脉动科技有限公司

中国代理商 OptoSystems

CL 7308 EXCIMER eCL-LASER

北京总部 地址：海淀区中关村东路84-8号 二层1-104单元, 100190 电话：010-62565117
传真：010-62565117-803
邮箱：info@pulsepower.cn
官网：www.pulsepower.cn
108841, Moscow, Troitsk,
Kutuzovskoye Shosse, 17/1
info@optosystems.ru

上海办事处
021-60720971

深圳办事处
0755-26922729

成都办事处
17710735621

FEATURES

Pulse duration > 180 ns
Power stabilization
Thyratron Switch
Built-in energy detector
Premix gases
Computer control



- 308nm laser pulses can be used very efficiently in Coronary Angioplasty
- XeCl laser Model 7308 is ideal for intravascular tissue ablation
- Main feature of XeCl laser Model 7308 is long pulse duration of laser pulses
- Laser beam can be delivery to target by UV fiberoptic catheters
- Pulse energy transmitted through optical fiber strongly depend on pulse duration - Longer pulses means higher energy at distal end of optical fiber

SPECIFICATION

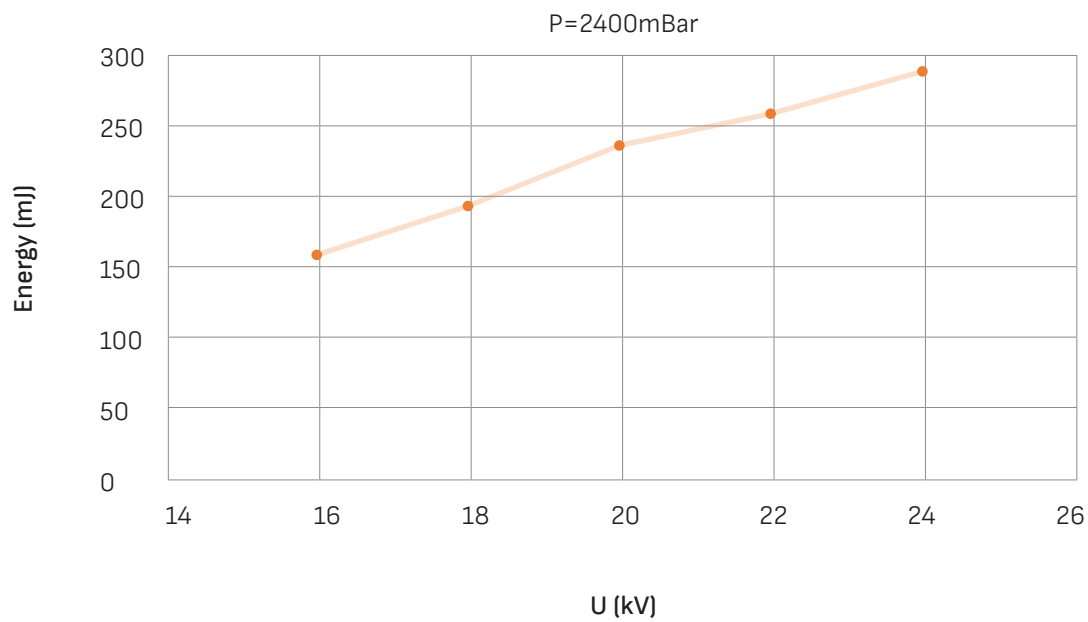
Model	CL-7308
Wavelength , nm	308
Max. pulse energy, mJ	280
Repetition rate, Hz	30
Pulse duration (FWHW), ns	180
Divergency (Vertical X Horizontal), mrad	2,6 X 1,4 (standard specification)
Beam size (Vertical X Horizontal), mm	22 X 14 (standard specification)
Jitter, ns	2 ns
Control	RS 232, Windows
Cooling	Air at short term / Water - long term operation
Power	single phase, 220V / 50Hz, 1.5 kW
Dimensions (weight)	1360L × 382W × 720H mm (170 kg)

CL 7308

EXCIMER XeCL-LASER

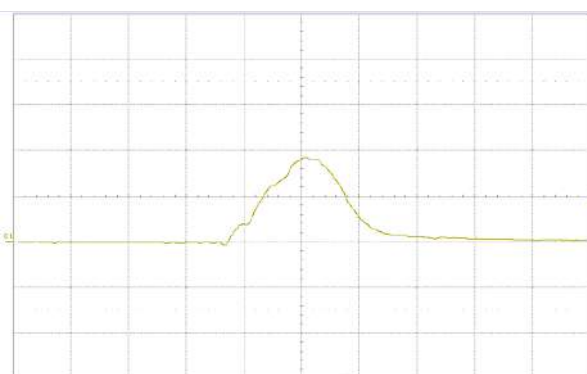
Optosystems LTD
 108841, Moscow, Troitsk,
 Kaluzhskoye Shosse, 4/1
 T +7 (910) 451-99-36
 info@optosystems.ru

PULSE ENERGY VS CHARGING VOLTAGE

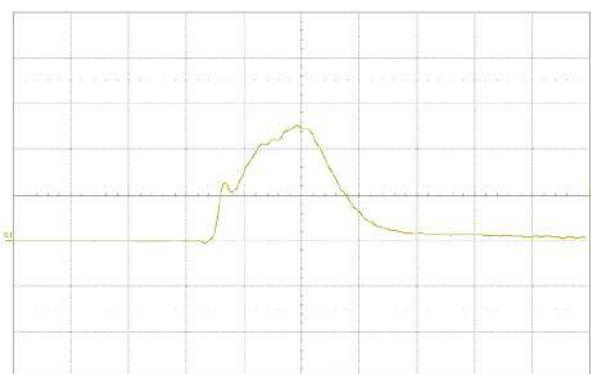


PULSE SHAPE

- High-Speed Photodetector DET10A/M + 350MHz Oscilloscope LeCroy.
- Pyroelectric Sensors PE50-DIF-U-SH-V2 + Power Meters Nova II.



$U_0=16\text{kV}$, $E=158\text{mJ}$, $\tau_{1/2}=147\text{ns}$



$U_0=24\text{kV}$, $E=280\text{mJ}$, $\tau_{1/2}=180\text{ns}$

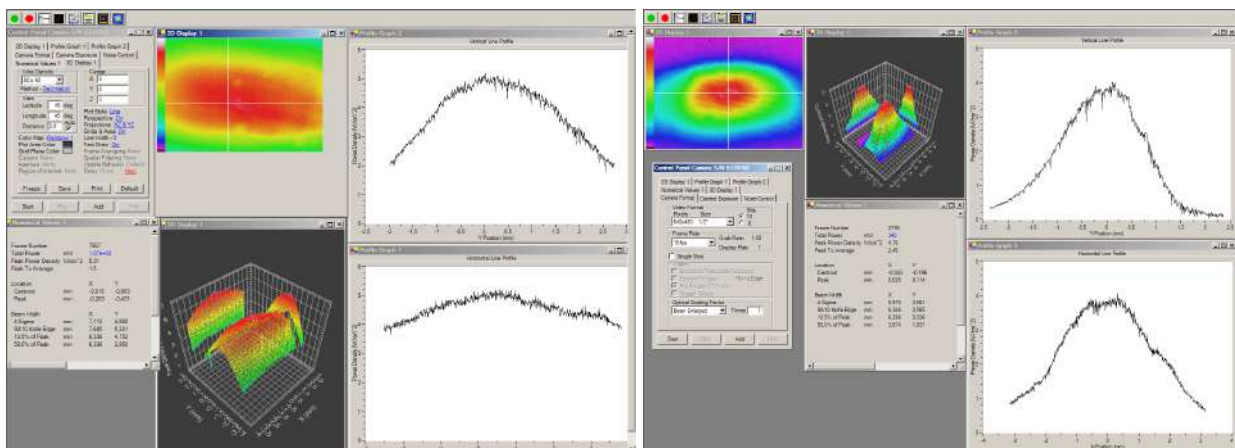
CL 7308

EXCIMER XeCL-LASER

Optosystems LTD
 108841, Moscow, Troitsk,
 Kaluzhskoye Shosse, 4/1
 T +7 (910) 451-99-36
 info@optosystems.ru

Laser Model 7308 has good symmetry of laser beam (dimensions and divergency) for coupling with optical fiber. Laser has two versions for beam specification

	Standard specification	Optionally
Beam size (V x H), mm	22 x 14	14 x 14
Divergency (V x H), mrad	2,6 x 1,4	1,4 x 1,4



BEAM PROFILE

Measured by BEAMSTAR FX-50
 (Laser Beam Profilers OPHIR)

BEAM DIVERGENCY

Measured by BEAMSTAR FX-50
 (Laser Beam Profilers OPHIR)
 at focal point of mirror with R=2700 mm

BEAM PHOTO (THERMAL PAPER)

At 850mm from output aperture



CL 7308

EXCIMER XeCL-LASER

Optosystems LTD
 108841, Moscow, Troitsk,
 Kaluzhskoye Shosse, 4/1
 T +7 (910) 451-99-36
 info@optosystems.ru

DIMENSIONS

