

Iceblink

3 W Supercontinuum Fiber Laser

Iceblink is a supercontinuum fiber laser covering the 450-2300 nm spectral range with over 3W of average power and superior stability (<0.5% std. dev.).

The spatial coherence and broad spectrum of the Iceblink makes it a great alternative to a classic lamp, single-line lasers, LEDs and ASE sources.

It is a very versatile white light source with a world of applications in the scientific and industrial sectors, including absorption/transmission measurements for material characterization, VIS, NIR and IR spectroscopy, single molecule spectroscopy and fluorescence excitation.

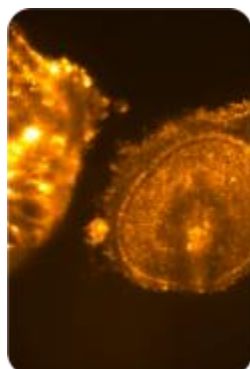
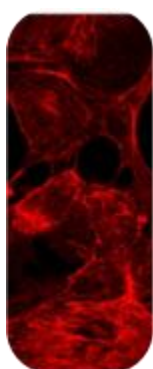
Spectral Range **Average Power**
450-2300 nm > 3 W

**Pulse Duration (at
fundamental
wavelength, 1060nm)**
< 10 ps

/ Highlights

- Best Jitter
- Best Power Stability
- VIS+NIR Power Balance

/ Applications



Microscopy (FRET, TIRF, CLSM...)

Absorption / Transmission / Reflection Spectroscopy

Lifetime Measurement

Optical Device Characterization

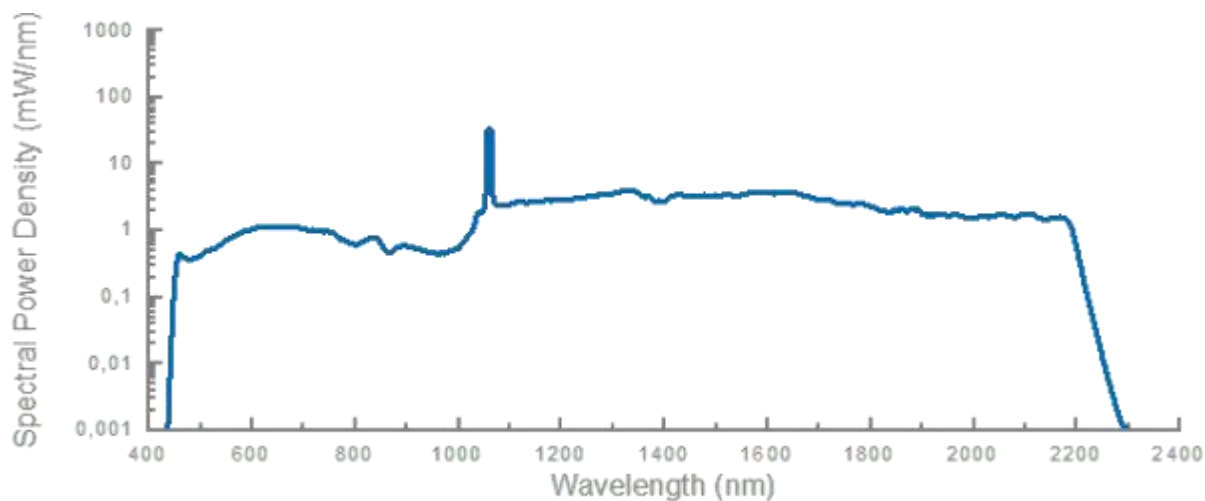
Metrology

Hyperspectral Imaging



Iceblink

/ Optical Spectrum



/ Accessories

Tunable Visible Range

BOREAL is the accessory for supercontinuum lasers to choose any wavelength in the visible range.

The perfect white laser plug-in accessory for bio imaging, nanophotonic and more.



Spectral Range:

450-750 nm

Optical Output:

Free Space or Multimode Fiber Output (1m) with FC/PC connector (FC/APC and Collimated output customizable)

Linewidth:

5 to 300nm

Selectable lines:

1

Resolution:

1 nm

Power Transmissions:

>75% (free space output) / > 25% (fiber output)

Iceblink

/ Technical Specifications

Spectral Range:	Average Power:	Repetition Rate
450-2300 nm	> 3 W	80 MHz
Visible Range (450-750nm) Average Power:	> 150 mW	
Pulse Duration (at fundamental wavelength, 1060nm):	< 10 ps	
Average Power Stability:	<0,5 % (std. dev.)	
Polarization:	Unpolarized	
Output Port:	Single Mode Fiber. 1 m length (customizable)	
Optical Output:	Collimated (in the range 450-1000nm), Single-mode across full spectrum	
Synchronization / Connections:	TTL Low Voltage	
Beam Diameter:	< 4.0 mm (1/e ² @ 532 nm, 0.5 m from output)	
Spatial Mode Quality, M2:	< 1.2	
Cooling:	Thermoelectric cooler + air cooling	
Power Requirements:	220 V / 110V - 50/60 Hz	
Operating Temperature:	20 - 30 °C	
Storage Temperature:	0 - 60 °C	
Dimensions:	436x560x151 (WxDxH)	



436 mm

151 mm



560 mm

Iceblink

/ Additional information



Laser Security:

This product is a Class 4 laser.

CAUTION – VISIBLE AND INVISIBLE LASER RADIATION
AVOID EYE AND SKIN EXPOSURE TO DIRECT OR SCATTERED
RADIATION.

Appropriate safety measures according to such laser class
should be taken in its installation and use.

Warranty:

24 months warranty or > 10,000h of continuous operation.

Extended warranty on request.

/ FYLA contact



Sales contact

Gaia Sardiello

gsardiello@fyla.com

+34 674 94 75 29

Support contact

support@fyla.com

+34 607 97 10 21